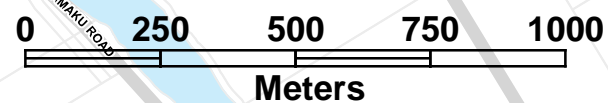
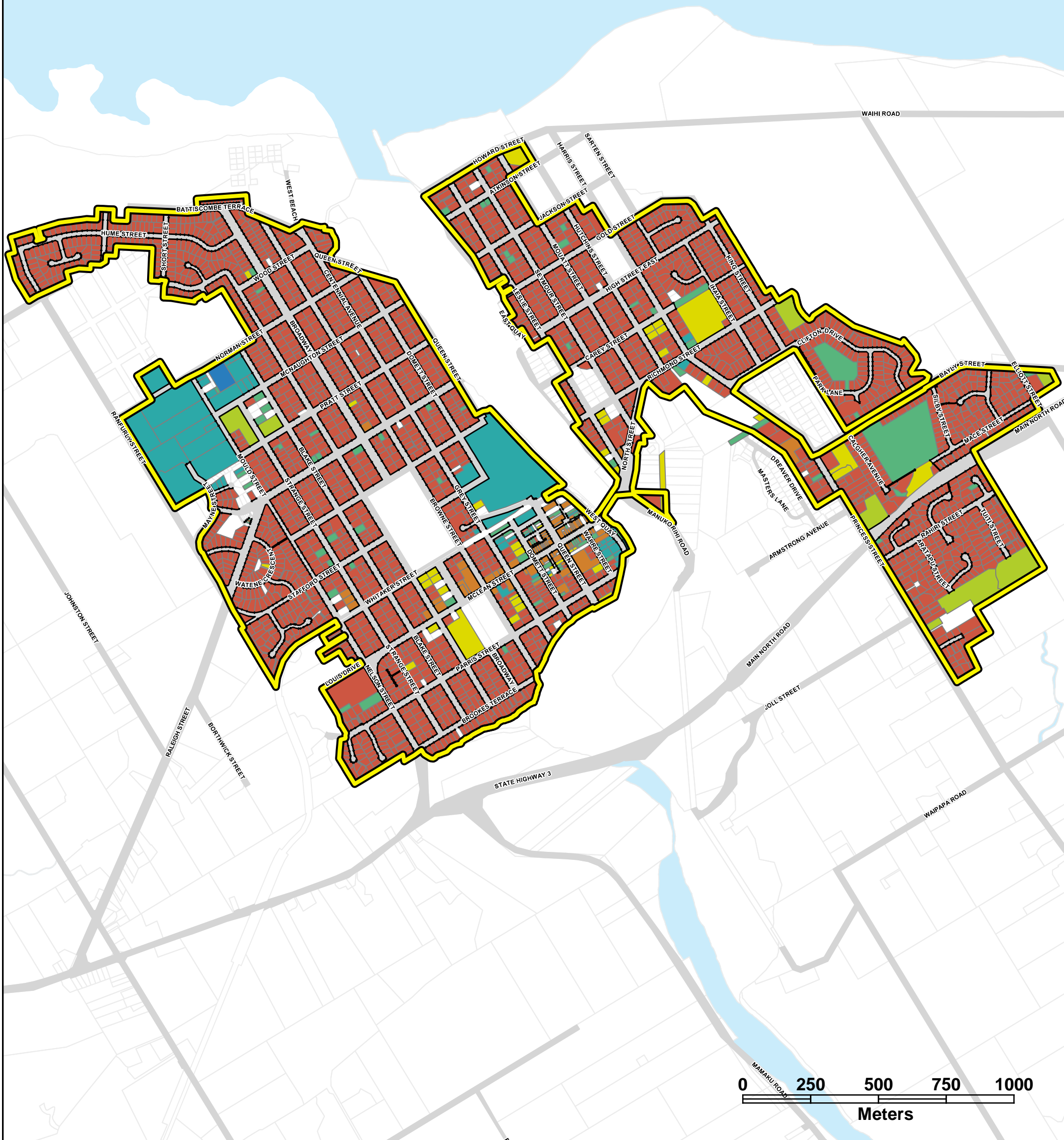
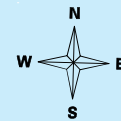


WAITARA



UFB2 Investigations VALUATION / ROAD FRONTAGES

Created by: JHovens Status: FINAL
 Projection: NZTM Request No.: UFB2
 Date: 26/09/2017 File name: UFB2_ANALYSIS_FINAL

| LEGEND | |
|--------|------------------------------|
| | UFB2 Plus Boundary |
| | Road Frontages |
| | Commercial |
| | Dairying |
| | Horticulture |
| | Industrial |
| | Lifestyle |
| | Other |
| | Residential |
| | Specialist |
| | Utility Assets |
| | River/Lake |
| | Road Parcel |
| | Valuation Data Not Available |

ACKNOWLEDGEMENTS AND DISCLAIMERS

DISCLAIMER
 1. This GIS material is made available at the discretion of Ultrafast Fibre. Maps and data are to be used for indicative purposes only and Ultrafast Fibre is not responsible for any inaccuracies. Ultrafast Fibre excluded to the fullest extent possible all liability, for any cost or expenses, direct or indirect (including loss of data and loss of profit) arising from any inaccuracy in, or use of, the GIS material supplied by Ultrafast Fibre.
 2. It is your responsibility to ensure you are aware of all utility installations in your area of work. You will be liable for all cost and expenses (Direct and indirect, including solicitor-client cost) incurred by Ultrafast Fibre if you damage or affect any of Ultrafast Fibre's equipment, including cables.
 3. Meshblock and Area Unit Boundaries sourced from Statistics New Zealand
 4. CRS and Valuation data sourced from Core Logic

